



Grplcon 2.0 Contents

Overview

[Grplcon 2.0](#)

Installing Grplcon 2.0

[Installation](#)

Using Grplcon 2.0

[How to Use Grplcon](#)

Customizing Program Manager Groups

[Assigning Group Icons](#)

[Setting Wallpaper Background](#)

[Changing Background Colors in Group Windows](#)

Other Grplcon Features

[Inner-City Software Icon Library](#)

Registering Grplcon

[How to Register](#)

About Inner-City Software

[Who We Are](#)

[Other Inner-City Software Product Offerings](#)

[Product Catalog](#)

[Mailing List](#)

Grplcon 2.0

"Group Icon software, What a Great Idea!"

-Linda Mercer, Cary, IL

Grplcon is a simple little utility for Microsoft Windows™ 3.x that allows you to visually customize your Windows Program Manager by associating icons to your Program Groups to replace the default Group Icon which all Groups otherwise display. The icons make Windows Program Manager easier to use, especially if you have many Program Manager Groups. Grplcon reads icons from just about any Windows file that can contain icons, including files with the extensions ICO, EXE, DLL, DRV, IL, NIL and ICL.

"I have 'test driven' the program and find myself most impressed with the appearance of my WINDOWS group icons."

- Charles J. Keller - Glen Burnie, MD

"This is a really neat program which sure makes distinguishing the program groups easier."

- Jim Whitworth - Dallas TX

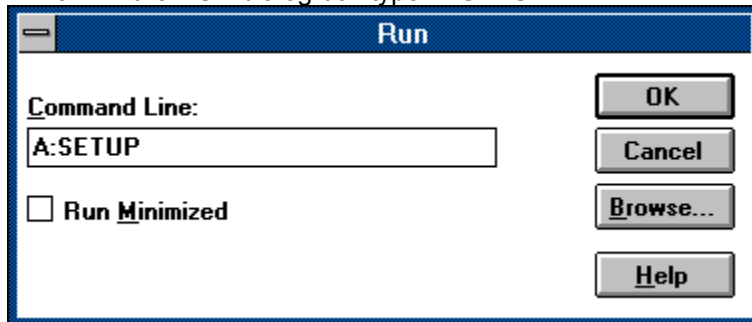
"I find it both useful and well designed."

- Michael Robinson - Rancho Palos Verdes, CA

Installation

The install process for Gprlcon is simple.

1. Insert Install disk in disk drive
2. In Program Manager or File Manager, select File/Run (Alt F,R)
3. In the RUN dialog box type: A:SETUP



4. The Gprlcon setup program will scan to confirm space requirements for installation and begin the install process. At this time you will be asked to select the directory in which Gprlcon is to be installed.
5. After the program files are copied setup will ask if you want to setup Gprlcon in a preexisting group or create a new group. It will also ask if you want Gprlcon to be run at Windows startup
6. Setup will confirm successful installation.

Congratulations! Gprlcon is ready to go.

Related Topics:

[Starting Gprlcon](#)

Starting Gprlcon

To start Gprlcon ;

- Double-click on the Gprlcon icon or,
- Highlight Gprlcon icon and press ENTER or,
- Select File/Run and type GRPICON in the dialog box.

Gprlcon is now active and running in hidden mode.

How to Use Gpplcon

Upon completion of your successful installation you can start Gpplcon as previously described. Unless you change the Visibility Option, Gpplcon does not show an icon when it is running. The visibility option can be changed by running a second instance of Gpplcon. To hide the visible Gpplcon icon select HIDE from the control menu. The dialog controls in Gpplcon are standard Windows 3.1 Common Dialog controls, which are described in your Windows User's Guide. Please refer to it if you need assistance in navigating the dialog box controls.

Related Topics:

[Modifying Options](#)

Modifying Options

To view or modify options select "*About Grplcon*" from the Group Properties menu. The dialog box contains various options which enable setup modification as well as options to change icon size and fonts.



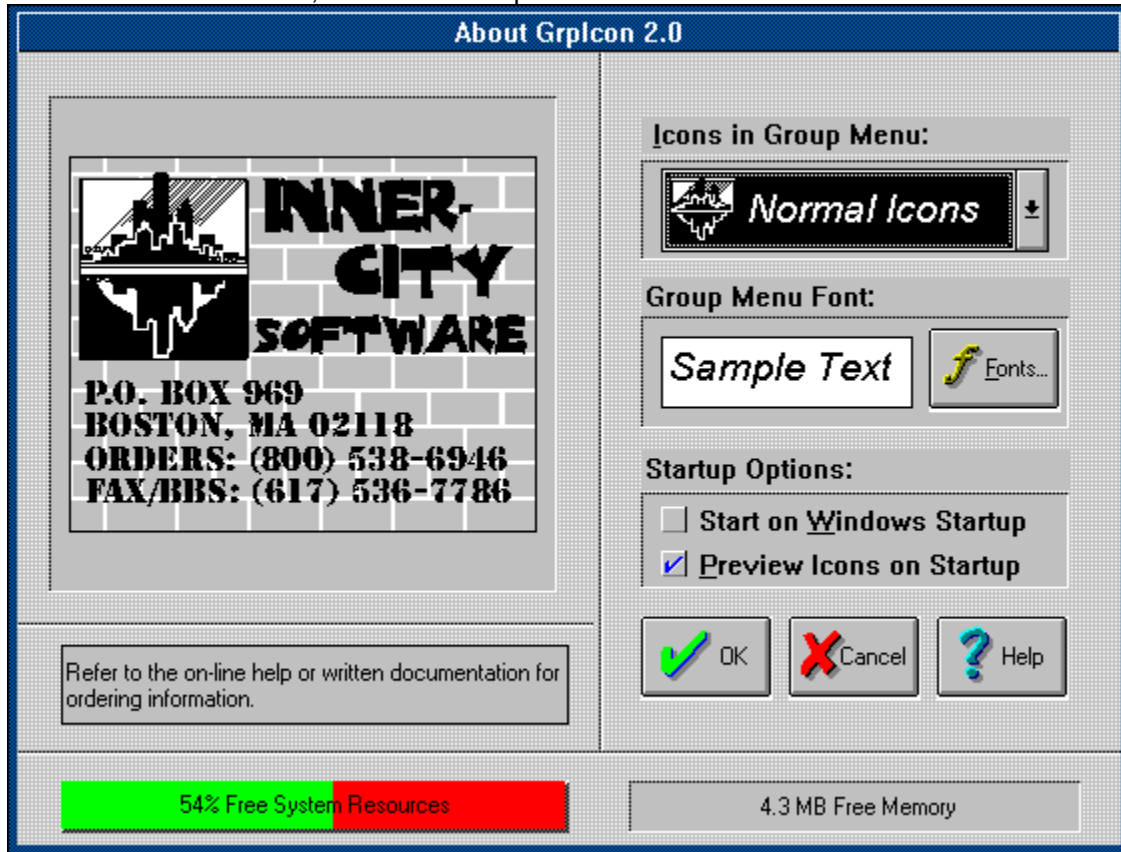
Related Topics:

- [Changing Startup Configurations](#)
- [Changing Group Properties Menu Fonts](#)
- [Changing Group Properties Menu Icon Size](#)
- [On-line Help](#)
- [Registration](#)
- [GO](#)

Changing Startup Configurations

To change startup options, font or icon size in the "Group Properties" menu, select the **OPTIONS** button on the dialog box by clicking on it with the mouse or using the TAB key to select and press ENTER. The dialog box will now show listboxes to select font style and size and checkboxes to allow changes to the startup configuration.

If you wish to start Gprlcon on Windows startup check the startup option box, either by clicking on it with the mouse or, use the TAB + spacebar to select.



Changing Group Properties Menu Fonts

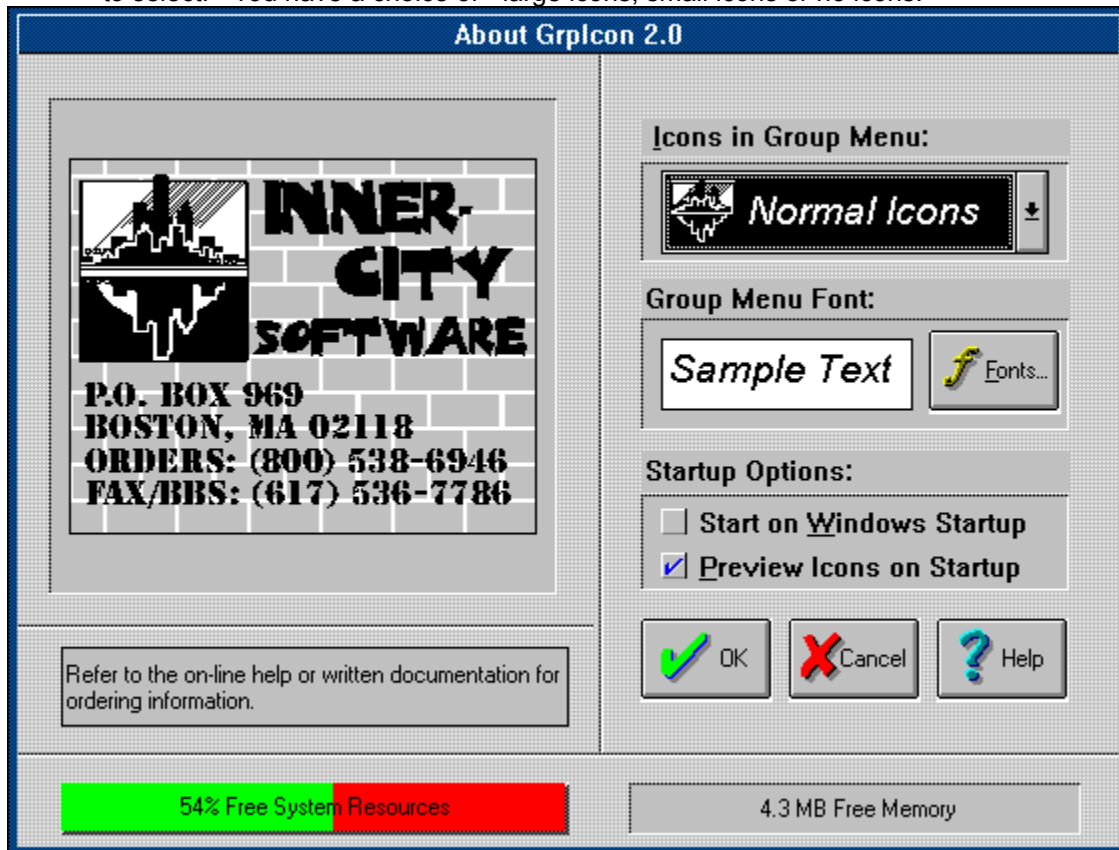
The option dialog box also features options to change the appearance of the font style, and/or icon size in the Group Properties menu. (This changes the font and/or icons in this menu ONLY, it has no affect on any other fonts or icons.)

To change font style or size, click on the Font button with mouse or, use the TAB+spacebar to select the Font button.

A character dialog box will appear, view and select your font style and size from this box.

Changing Group Properties Menu Icon Size

To change the icon size in the Group Properties Menu, click on the icon list box, or TAB + spacebar to select. You have a choice of large icons, small icons or no icons.



On-line Help

On-line Help may be accessed by selecting the HELP button. If this button appears grayed after installation, check the path of the GRPICON.HLP file. It should be in the directory which Grplcon was installed.

Registration

How to Register

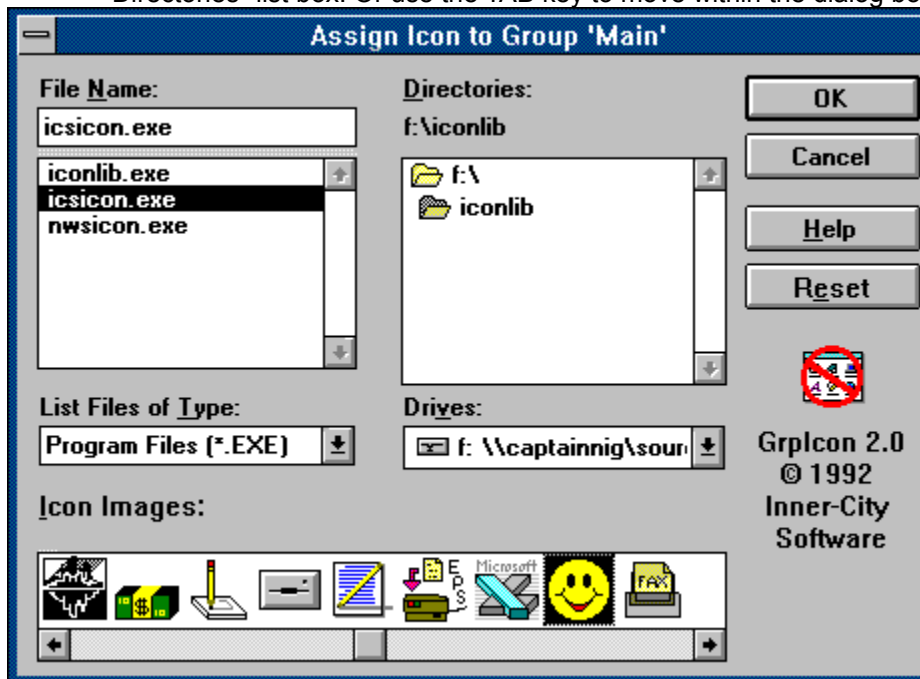
GO

The GO option allows you to run Gprlcon after installation changes immediately take place, there is no need to restart Windows. Once the GO button is pressed the option window will close.

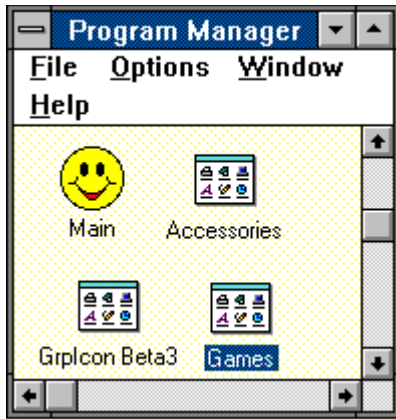
Assigning Group Icons

To customize your Program Manager Group icons, follow these steps:

1. Click once on the System Box (in the upper left corner of the window) of any Program Manager Group or using the keyboard type Alt+spacebar. This will open the Groups' System Menu.
2. You will notice that a menu option called "Group Properties" has been added to the System Menu. Select the Group Properties option.
3. The options for the Group Properties Menu read "Set Icon...", "Set Color", "Set Wallpaper" and "About GrpIcon..." Select Set Icon.
4. The "*Assign Icon to Group*" dialog box will appear. The list box titled "Files" will list files in the current directory. Use the mouse to navigate through your directory structure with the "Directories" list box. Or use the TAB key to move within the dialog box when using the keyboard.



5. When a file is highlighted in the Files list box, if the file contains icons, the icons will appear in the icon viewer at the bottom of the dialog box. Some file formats may contain several icons. EXE and DLL files generally have icons embedded in them. GpIcon comes with a library of icons stored in a file named ICSSICON.EXE which is installed with GpIcon.
6. Use the scroll bar on the icon viewer to search forward or backward for other icons, if necessary. When using the keyboard use the TAB key to move within the dialog box and select icons by using the arrow keys, if necessary.
7. Once a suitable icon is selected, close the dialog box by clicking on OK or pressing ENTER. The selected icon is immediately assigned to the active Program Manager Group. If the dialog box is closed by pressing the ESCAPE or CANCEL button, no changes will be made to the Group. Do not press the RESET button

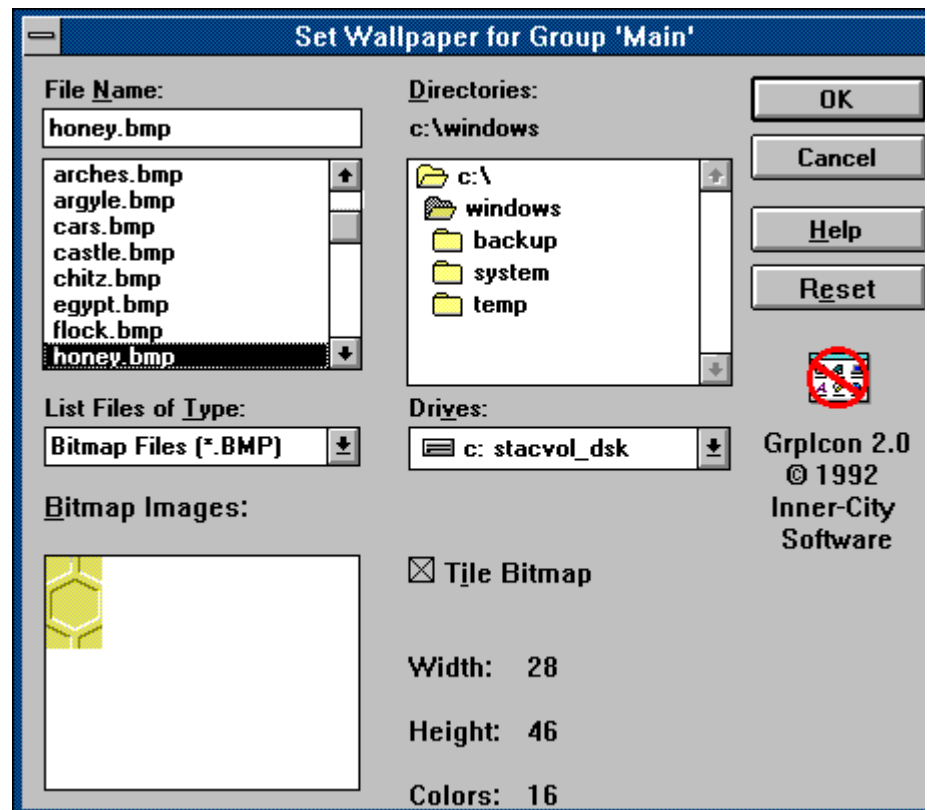


8. Perform the preceding steps for each Group whose icons you wish to customize.

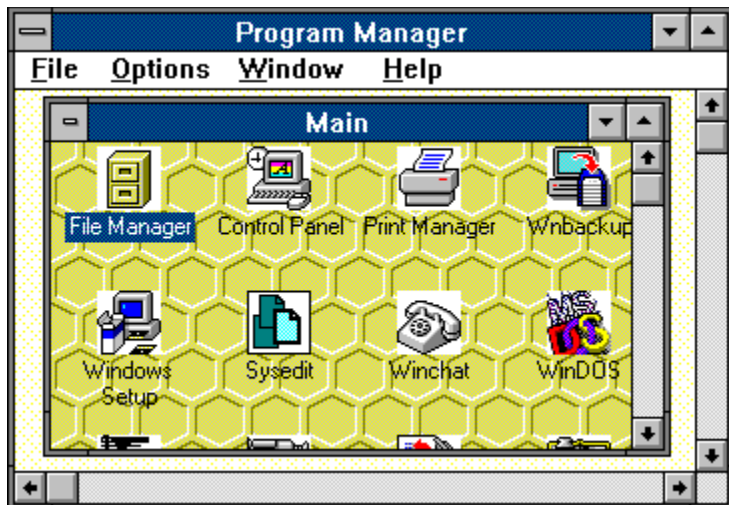
Setting Wallpaper Background

To set wallpaper background to Program Manager Groups:

1. Select the group which the wallpaper is to be assigned and from the System Menu select Group Properties. (Alt+spacebar, using keyboard)
2. Select the "Set Wallpaper" option and the "*Set Wallpaper*" dialog box will appear.



3. To select the Bitmap to be used, locate the Bitmap file in the File list box. (Grlpcon has installed Bitmaps in the IMAGES subdirectory of the Windows directory.) Then using the mouse, click on the desired Bitmap and OK or use the TAB+arrow keys to select Bitmap and press ENTER.
4. When a Bitmap is highlighted in the Files list box, it will appear in the Bitmap viewer at the bottom of the dialog box. The Tile option permits the bitmapped image to be tiled over the entire window background.

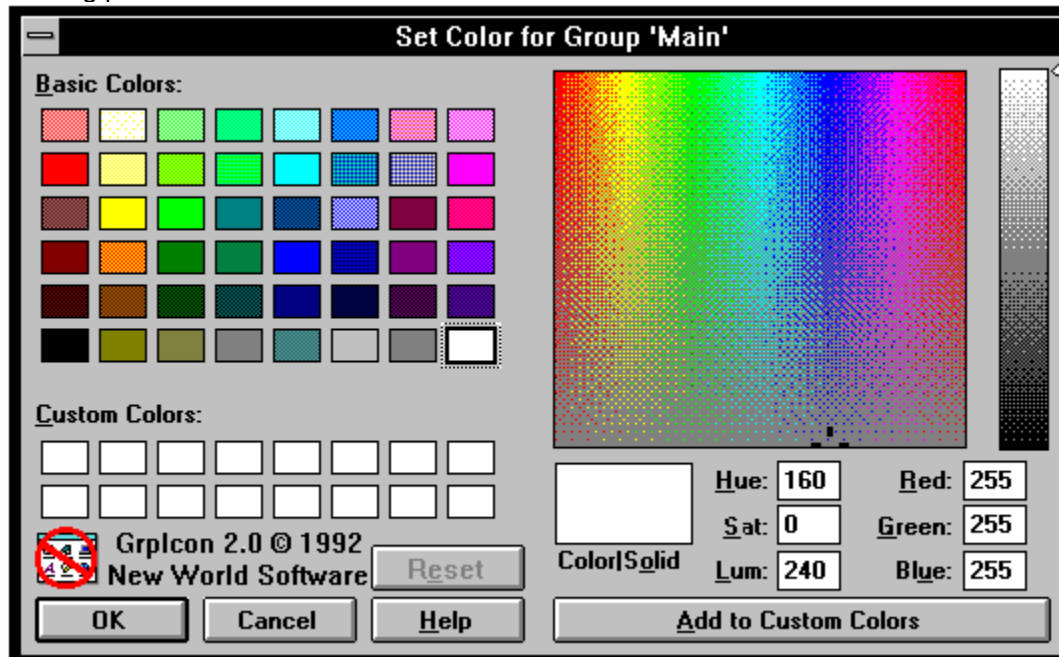


5. Once a suitable Bitmap is selected, click on OK or press ENTER. This will immediately assign the Bitmap to the Group and close the dialog box.
6. Perform the preceding steps for each Group you wish to customize with a wallpaper.

Changing Background Colors in Group Windows

To assign background colors to Program Manager Groups:

1. Select the Group for which the background color is to be assigned and from the System Menu select Group Properties.
2. Select the Set Colors Option and the "Set Colors" dialog box will appear.
3. Select the background color for the group window. You may select a background color from the existing palette or create a custom color.



4. To create Custom Colors
Using the mouse drag the color refiner cursor to the area of the color definer box until the desired color appears in the Color/Solid box.
Using the keyboard, type value in the Red, Green and Blue or the Hue, Sat and Lum boxes.
5. Once you have the desired color, click on the Add Custom Color. (using the keyboard, TAB+spacebar) The new color will appear in the Custom Color Box at the bottom of the dialog box.
6. Select the color by clicking on the its' box or TAB to the box and press the spacebar.
7. Once the color is selected, click on OK or press ENTER. This will immediately assign the color to the Group and close the dialog box.
8. Perform the preceding steps for each group you wish to assign background color.

Inner-City Software Icon Library

The Inner-City Icon Library is a file containing a number of icons which can be used as program icons. When the icon library is opened, it allows for icon replacement by using the Windows drag and drop function. This function can only be performed using the mouse. The icon library is installed in the Grlcon program group during install.

To use the ICS Icon Library;

1. Open the Program Manager group for Grlcon. Using the mouse, double click on the ICS Icon Library icon.



2. Select the icon you wish to use.
3. Click and hold down the mouse button while dragging the icon over the program group you wish to assign to it.
4. Release the mouse button and the icon will be immediately assigned.

How to Register

Grplcon is distributed via BBSes and other channels in its *Demonstration Mode*. *Demonstration Mode* allows you to evaluate the complete program without any limitation of features so that you can make an informed decision as to whether or not you will purchase Grplcon. If you purchase Grplcon, you will receive a Registration Number which will place the program in *Operating Mode*. The only difference between the two modes is that when Grplcon is operating as a Demo, it reminds you every now and then that it is running (It was discovered during our Beta Test cycle that the enhancement Grplcon provides is so natural and commonsense that people tend to forget that Grplcon is there!).

Purchasing and registering Grplcon costs only \$20.00 in US currency. Checks and money orders should be sent to:

INNER-CITY SOFTWARE

P.O. BOX 969

BOSTON, MA 02118-0969

Registration will entitle you to free technical support, upgrades and discounts on other Inner-City Software products.

Related Topics:

[Grplcon 2.0 Registration Form](#)

Grplcon 2.0 Registration Form

To register your copy of Grplcon, print and fill out this form

(to print select Print Topic in the Help File Menu)

Send this form and a check or money order for \$20.00 (in US Funds) to Inner-City Software at the address listed below

INNER-CITY SOFTWARE

P.O. BOX 989

BOSTON, MA 02118-0989

NAME _____

ADDRESS _____

CITY _____ STATE _____ ZIP _____

TELEPHONE(s) _____

OCCUPATION _____

Let us know where you got Grplcon, (please be specific)

Let us know what you think of Grplcon

Who We Are

Inner-City Software is a small-time outfit that wants to grow up into a large small-time outfit.

What we mean is, although we want to get big enough so that everyone in the world will be using our stuff someday, we don't want to lose the informality and fun style of the basement programmer's shop that we are today. The name "Inner-City Software" is designed to let you know that this product came to you straight outta the 'hood. All of the people who made this happen are products of various inner-city, predominantly Black neighborhoods throughout the USA. The reason for making this type of statement is twofold; for those who do not live in the 'hood, we want you to know that there is a lot of positive creativity and downright genius in the 'hood. Just don't expect to read about it in your newspaper - positive news doesn't sell papers. For those who are in the 'hood, we want to be an inspiration and encouragement to continue learning and teaching and reaching, because it **IS** true that you can do whatever you set your mind to - don't believe the hype that tells you otherwise!

If you really came to this screen to find out about other products and stuff like that, try one of the subjects below:

[Other Inner-City Software Product Offerings](#)

[Product Catalog](#)

[Mailing List](#)

And if you are still reading this and are interested in finding out more about the mission of Inner-City Software and how you may be able to help us fulfill our mission, then click on the little logo below.



Other Inner-City Software Product Offerings

As of the date of this release, Gprlcon is the only released product bearing the Inner-City Software name. Last year, we did NoDOS (the 'DOS' Icon Eliminator), but we sold that product to someone else. Oh yeah, we also have a couple of freebie programs out there, like the ("I'll Be Back") Terminator that talks to you, and the Windows 3.1 Control Panel Applet for After Dark, and PFBFix, a font utility we did last year, but Gprlcon is really it right now. We are about halfway complete with a WONDERFUL set of utilities that will complement Gprlcon and make life with Windows even more simple, fun and useful. Stay tuned for further details.

Product Catalog

There ain't one yet. When there is, you'll get it in the mail if you are a registered user of any Inner-City Software product.

Mailing List

Whenever a new product comes out, we will drop you a line if you have registered anything with us. It is not really economically feasible to send out letters for upgrades for \$20 packages, but if we get our act together and put out some higher-ticket stuff, then we can afford to send out letters for everything!

Related Topics:

[Inner-City Software's Mission and How U Can Help](#)

Inner-City Software's Mission and How U Can Help

Inner-City Software is committed to developing profitable hi-tech computer-based businesses within the inner city communities of America. At this time, the development and marketing of computer software programs is our primary vehicle for achieving this mission. Our short-term game plan is to penetrate the market with our existing products, and then to expand our operation to provide training in computer programming and literacy from the junior-high school level on up. We believe in self-determination and are confident that people will do for themselves and break the vicious cycles of dependency that have been developed in our inner-city communities if and only if the following things happen:

1. They are convinced that they do have a chance to be somebody
2. They have access to role models of success with whom they can identify
3. They are encouraged by persons they respect to work towards self-dependency
4. They are given tools and techniques that they can use to become independent
5. They have a support system to help keep them on track and counterbalance the negative society in which we live.

Our goal is to eventually provide all of these benefits to whomever chooses to work with us.

To achieve our short-term goals, we need to complete the two dozen or so product ideas which are under development or still on the drawing board, and we need to get these ideas out as soon as possible. For this to happen, we need to be able to work on these projects 24 hours a day instead of just evenings and weekends, as is the present case. In other words, we need to secure adequate financing to support a couple of programmers and a clerical/marketing person. To that end, we are working on a formal business plan which is targeted for completion by June 1993. For a first round of financing, we will be soliciting a relatively small amount of money, which will be used primarily to cover living expenses while we work on developing a market presence in the computer software industry. If you or someone you know are curious about the possibility of investing in Inner-City Software, please contact Kenny G. at (800) 538-6946 anytime. Together, we can become part of the solution. Peace.

Credits:

The following persons contributed directly to the Inner-City Software product that you are using right now:

Who

Kenny G.
MC Darryl D
Isis
Michele Brooks & Kulaj Enterprises
Hi-Fi Rick, Howie, Patrick, Ted and Jim

What

Product concept and program coding and debugging
Coding assistance on several app and DLL routines
For clerical and moral support and good ideas
For Windows Help and the Manual
For Beta testing and suggestions

Acknowledgments and Thanks:

I would like to thank the following persons and organizations that have been helpful in some way or another to making this product and Inner-City Software a reality:

Thanks To:

Blaise Computing
Controls

Eric Granderson

Kappa Alpha Psi Fraternity

Marcus Garvey, The Honorable Elijah Muhammad,
Napoleon Hill, Martin Luther King Jr,
El-Hajj Malik El-Shabazz

Microsoft Developer Support

Mike Neumann

For:

For providing the basis for the ICS Custom
- they are based on the Blaise Windows Control
Palette library
For introducing me to the Science of Personal
Achievement
Yo

Their life's work

Sample source code

For constant encouragement and negotiations

with

Mom & Dad

The Captain

The Honorable Louis Farrakhan and the Nation of Islam
the

And of course, I want to thank you for using this program, whether you register it or not. The mere fact that you like the program and continue to use it is an affirmation of the marketability of my ideas. If there was something missing in the program that caused you to decide not to register it, you thought it was not worth registering, or whatever, please feel free to call toll-free at (800) 538-6946 with your comments or suggestions. Your feedback will help make the next Inner-City Software product better, and maybe I will get you to kick out the cash next time!

Peace.

-Kenny G.

our first corporate client

Good raising and all the support and encouragement that one could ask for

Positive energy, kindred spirit and business plan assistance

For continuous wake-up calls and reminders of the condition of the have-nots of America

Glossary of Terms

Background Colors

Custom Colors

Group Icon

Group Properties

Group Properties Menu Fonts

Group Properties Menu Icon Size

Icon Library

Icon Viewer

Reset

Set Color

Set Icon

Set Wallpaper

Startup Configurations

Test Drive

Tile option

Visibility Option

Wallpaper

Background Colors

Colors displayed in window background or desktop.

Custom Colors

Option which allows you to modify colors to be used as background colors.

Group Icon

The icon that represents a group in Program Manager when the group window is minimized.

Group Properties

Added to the Control menu by Gprlcon. The Group Property Menu contains options to change icons, set color and wallpaper, as well as startup configurations.

Group Properties Menu Fonts

The Fonts that appear in the Group Properties menu can be modified using the FONT option in the Option dialog box.

Group Properties Menu Icon Size

The Options Dialog box has an option which changes the size of icons or eliminates icons in the Group Properties Menu.

Icon Library

Contains a number of icons and allows assignment of icon using the drag and drop function.

Icon Viewer

Allows you to view icons before assigning it to a Program Manager Group..

Reset

Reverts icons and background colors and wallpaper to Program Manager defaults

Set Color

Menu option which allows you to change the background colors of Program Manager group windows.

Set Icon

Option which allows you to set icon for Program Manager group

Set Wallpaper

Menu option which allows you to display a background bitmapped image in Program Manager windows.

Startup Configurations

Allows you to select how and when Gplcon will start.

Test Drive

Closes the About dialog box .

Tile option

Allows bitmapped images to be tiled to cover group window background.

Visibility Option

Allows you the option to have the Gprlcon icon visible while it is running.

Wallpaper

A bitmapped image displayed in window or desktop background.









Group Icons.

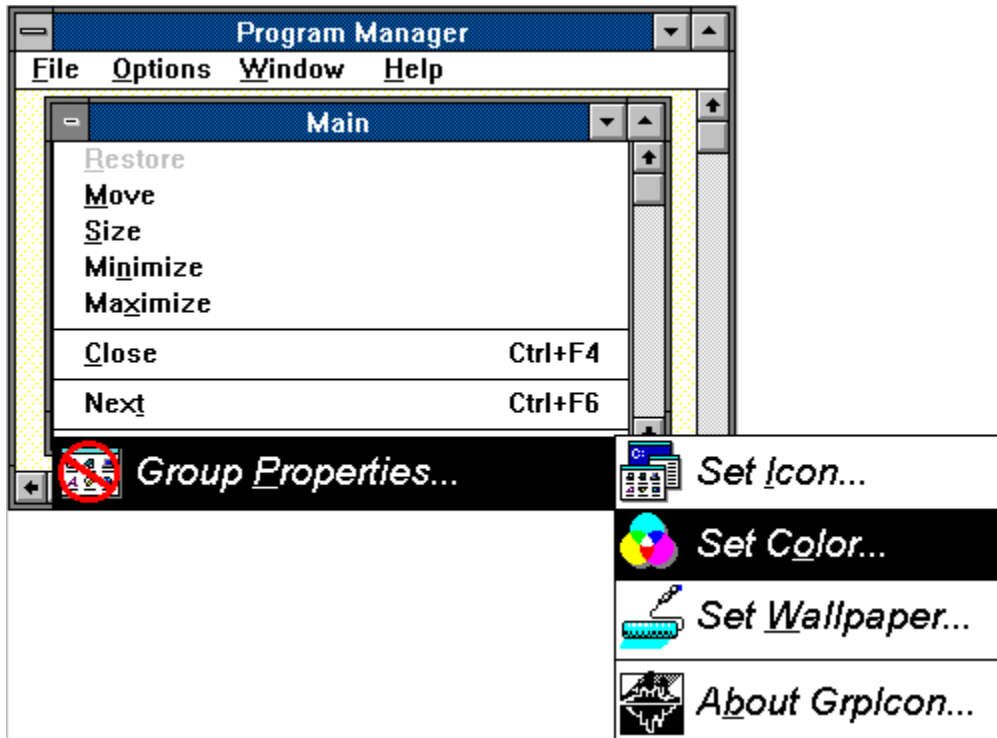
The "Set Icon" menu option lets you change Program Manager

The Inner-City Icon Library, when opened, will allow you to change the group icon of a minimized group by dragging and dropping.(see "Inner" Inner-City Software Icon Library)

The RESET button will revert icon to Program Manager default icon.

The "Set Wallpaper" option can be used to define wallpaper for Program Manager Groups.

You can create your own wallpaper, just be sure to save it as a bit mapped image.



The "Set Color" option launches the Choose Color Common Dialog, which is also available in Control Panel. All controls work identically as in Control Panel.

